



Sheldon

heart & soul for ministry

Jan 20

the Pound House



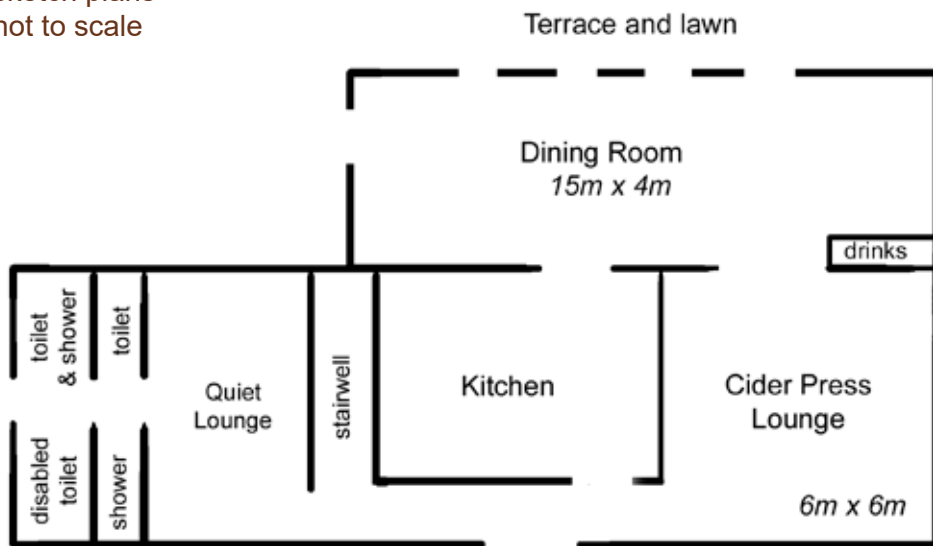
About the Pound House

A 17th century barn with cob walls and some original oak timbers. Fully refurbished to a high standard of comfort while retaining lots of traditional character.

- ☆ Light and spacious long meeting/dining room with hot drinks unit opens onto terrace.
- ☆ Two smaller meeting/sitting rooms.
- ☆ Large well-equipped kitchen (optional extra).
- ☆ Six en-suite bedrooms.
- ☆ Centrally heated.

Pound House downstairs

sketch plans
not to scale



Dining Room

- ☆ seats 40-45, folding tables and chairs, easy to move.
- ☆ sliding doors onto terrace with lovely views across the valley.
- ☆ underfloor heating.
- ☆ drinks unit with boiling and cold water, sink, fridge, etc.

Kitchen (optional extra)

- ☆ 3 electric ovens, 8 electric hotplates, electric grill, microwave.
- ☆ fridge, larder fridge, freezer.
- ☆ dishwasher, hot cupboard (wheels into dining room).
- ☆ fully equipped with cooking utensils, crockery, cutlery etc.

Quiet Lounge

- ☆ seats 10 in very comfy armchairs.

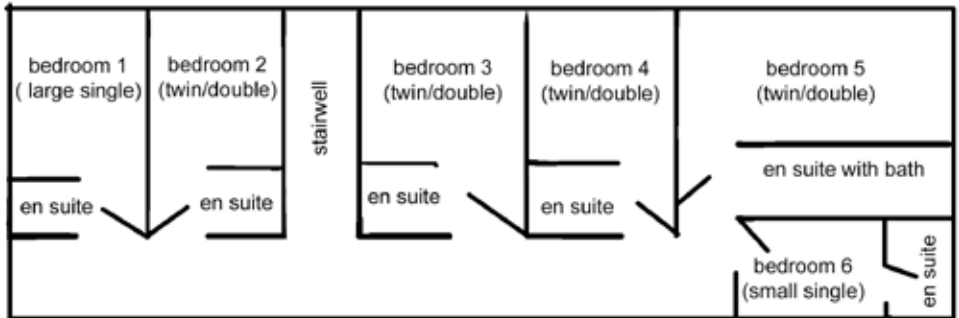
Cider Press lounge

- ☆ seats 20 in comfortable upholstered chairs and sofas.

Toilets and showers

- ☆ suitable for use by members of group bringing tent or caravan.

Pound House upstairs



Six en-suite bedrooms - 2 single, 4 twin/double

Each room has

- ☆ small table with upholstered upright chair.
- ☆ two 3-drawer bedside cabinets.
- ☆ hanging rail and hangers.

Each bed is supplied with

- ☆ 2 pillows each with an under-slip.
- ☆ 2 blankets folded in a bag.
- ☆ mattress protector and under-sheet.

Guests bring with them either

- ☆ sleeping bag and pillow slips, or
- ☆ bottom sheet, duvet and pillow slips, or
- ☆ two sheets and pillow slip.

Additional notes:

- ☆ Some extra mattresses can be provided depending on the type of group, age, etc.
- ☆ Room 6 is small (but perfectly formed!)

see our website for more details



The Cider Press Lounge



Bedroom 3



The Dining Room



The Kitchen



The Quiet Lounge



The Terrace